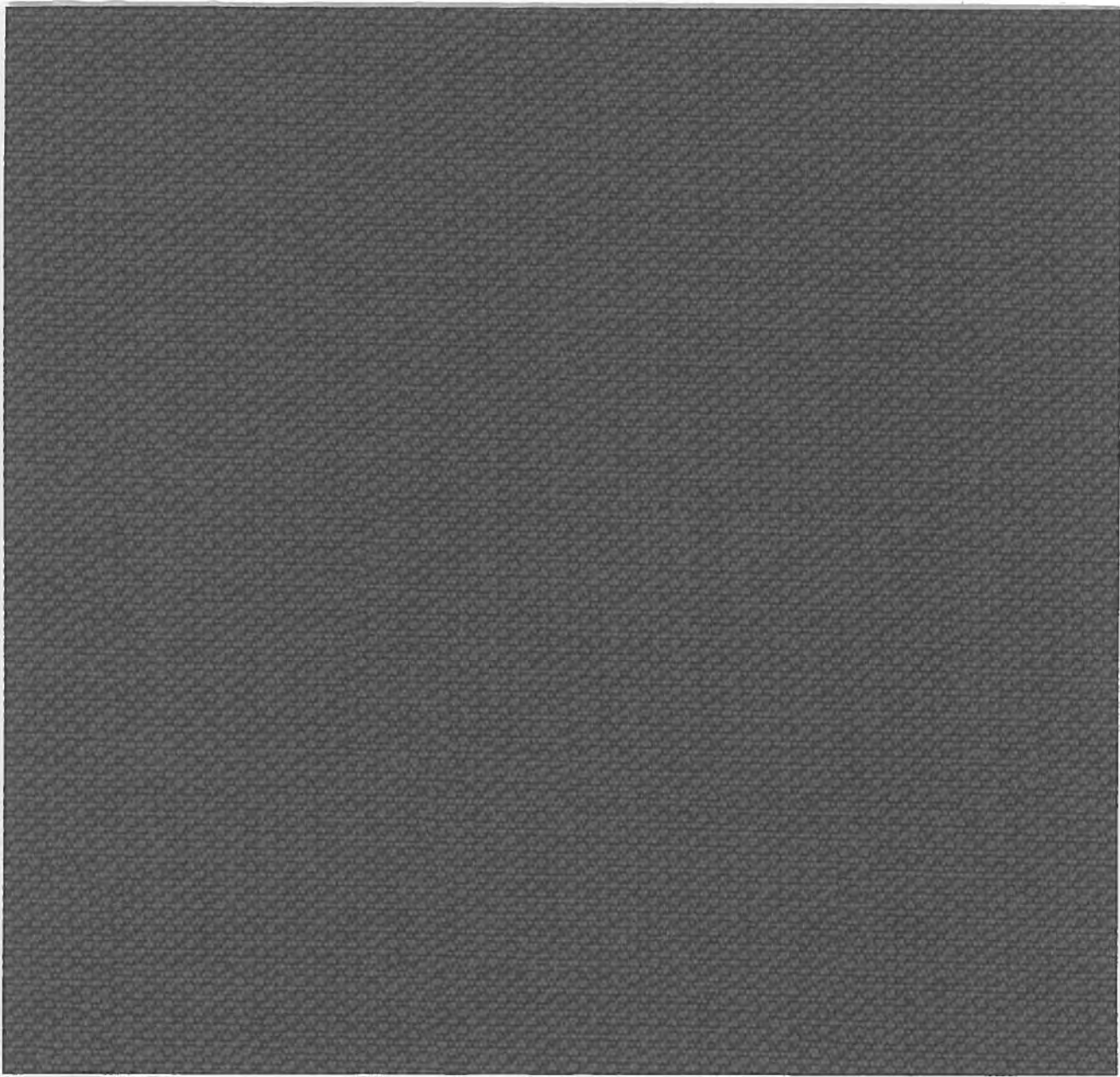
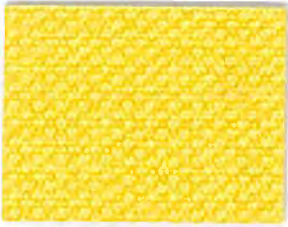


# BERWICK TWEED



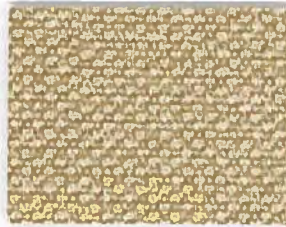
Thai Basil  
BRW-1800



After Glow  
BRW-100



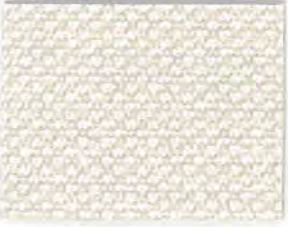
Bobcat Whiskers  
BRW-1100



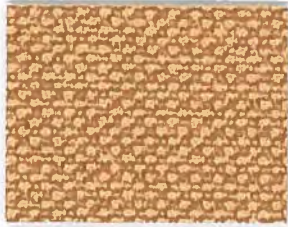
Sandy Toes  
BRW-1400



Mischeavous Mink  
BRW-1000



Angels Feather  
BRW-300



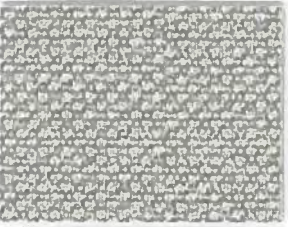
Spiked Apricot  
BRW-1700



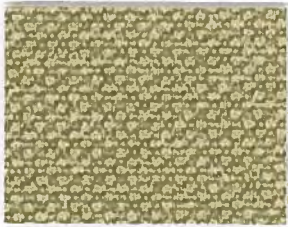
Soft Suede  
BRW-1600



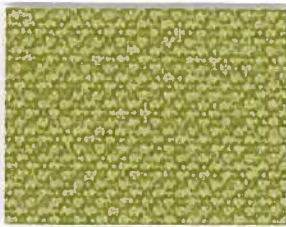
Baja Sunset  
BRW-400



Polished Pewter  
BRW-1200



Tranquility  
BRW-1900



Bodhi Tree  
BRW-500



Cedar Ridge  
BRW-700



Zen Essence  
BRW-2000



Sea Glass  
BRW-1500



Dream Catcher  
BRW-800



All Nighter  
BRW-200



Labrinth Walk  
BRW-900



Raccoon Eyes  
BRW-1300



Carbon Footprint  
BRW-600



# BERWICK TWEED

## ANTI-MICROBIAL and ANTI-BACTERIAL

**BERWICK TWEED** with **PRODURATECT™** top finish is manufactured to meet the following typical properties:

Width.....	54"
Nominal Weight.....	25 oz. per lin. yd.
Contents.....	PVC
Backing.....	Polyester
Cold Crack.....	-10°F
UV Stabilized Pigments.....	500 hours
Abrasion Resistance.....	Wyzenbeek (100,000 cycles)
Class Rating.....	ASTM D 3690 Class A
Thickness.....	1.2 mm
Anti-Bacterial/Anti-Microbial.....	Pass (NYS63/ASTM G-21-90)

**Compatible with commercially available adhesives.**

**Suggested Applications:**

Office Interior, Hospitality, Restaurant, Healthcare, Gaming, Residential, RV, Marine Interior

**Meets flammability requirements\*:**

- Motor Vehicle Safety Standard 302
- California Technical Bulletin 117 Section E
- New York & New Jersey Port Authority
- Federal Aviation Specification 25.853
- Boston Fire Department Code
- NFPA 260 Class 1
- BIFMA Class A
- UFAC Class A
- CID A-A-2950

**Cleaning Instructions:**

This product should be cleaned with mild soap and water. Do not use alcohol based cleaners.

**These products have been treated with anti-bacterial and anti-microbial agents that will provide resistance to the following:**

- (AATCC Test Method 147-1993)
- Bacillus Mycoides
- Klebsiella Pneumoniae
- Proteus Vulgaris
- Staphylococcus Aureus
- Salmonella Choleraesuis
- Bacillus Cereus
- Enterococcus Faecalis
- Escherichia Coli

\*This term and any corresponding data refer to typical performance in the specific test indicated and should not be construed to imply the behavior of this or any other material under actual fire conditions.



CGPC is a certified ISO/TS 16949:2009 Manufacturer



INDUSTRY PARTNER



412 Boston Avenue Egg Harbor City NJ 08215 / [www.dougind.com](http://www.dougind.com) / Samples Fax 609 965 3221 / Samples e-mail [samples@dougind.com](mailto:samples@dougind.com)  
Customer Service Phone 800 950 3684 / Customer Service Fax 609 965 7271 / Customer Service e-mail [service@dougind.com](mailto:service@dougind.com)