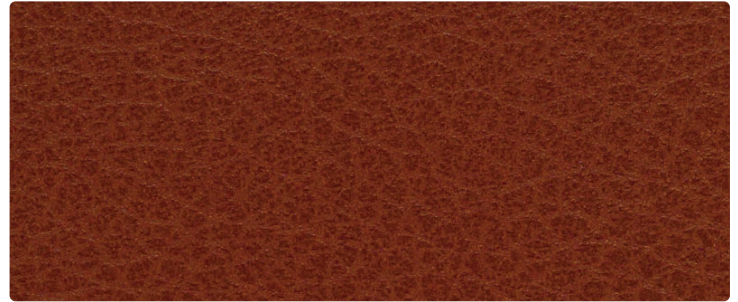


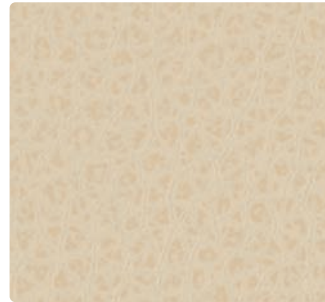
MK-009 Terra Cotta



MK-019 Henna



MK-010 Saddle



MK-027 Ivory



MK-017 Buff



MK-001 Geranium



MK-007 Buckskin



MK-026 Cliff



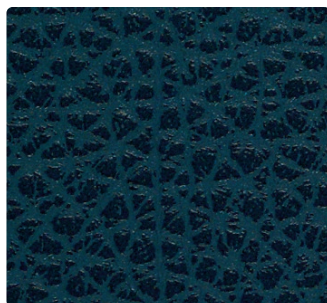
MK-014 Harbor



MK-020 Cocoa



MK-036 Pebble



MK-004 Sapphire



MK-000 Bark



MK-006 Angus



Application
Seating

Content
100% Vinyl

Width
54 inches

Abrasion
Exceeds 250,000 Double Rubs

Finish
Resilience^{SR}

Reduced Environmental Impact
GREENGUARD Certified
Phthalate (21P) Free
Lead Free








TECHNICAL INFORMATION

Content: 100% Vinyl
Width: 54"
Weight: 28 oz./linear yd.

Backing: 100% Polyester Knit
Finish: Resilience^{SR}
Cleaning Code: WS, BC

Approx. Repeat: Non-Matching
Directional: No
Railroaded: No

PERFORMANCE (Certification Marks Owned by ACT.)

Test Method	Results
Surface Abrasion: Heavy Duty  *	CFFA - 1A / Method ASTM D4157 (Cotton Duck) Exceeds 250,000 Double Rubs
Breaking Strength:  *	CFFA-17/ASTM D751 Warp 95 lbs/Fill 60 lbs
Seam Slippage:  *	CFFA-14/Method ASTM D751 Warp 45 lbs/Fill 45 lbs
Colorfastness to Crocking:  *	AATCC 8 Dry: Class 4 min / Wet: Class 4 min
Colorfastness to Light:  *	AATCC 16, Option 3 Passes 650 hours - Suitable for marine use
Cold Crack:	CFFA-6 Fed. Std. No. 191A-Method 5874 -20°F

FLAMMABILITY *

California Technical Bulletin 117-2013	Passes	FMVSS 302	Passes
NFPA 260 (Equivalent to UFAC) Class 1	Passes	IMO FTP 2010 Code MSC.307(88), Part 8, 3.1 & 3.2	Passes
BIFMA CS-191-53, Section 3 & 4	Passes		

May comply with California Technical Bulletin 133 when combined with appropriate components.

REDUCED ENVIRONMENTAL IMPACT

This product is GREENGUARD Certified for low chemical and particle emissions to UL standard UL 2818 and may contribute to LEED certification. For complete information visit mayerfabrics.com and UL.com/gg.

Phthalates listed on Prop 65 were not used in production.

21P Free - 21 Phthalates were not used in production (BBP, DCHP, DNPP, DPP, DEP, DNHP, DIBP, DINP, DIDP, DNNP, DIOP, DEHP, DBP, DMP, DNOP, DBZP, DMEP, DIPP, DPP, DIHP, DHNUP)

Lead/Heavy Metal Free Tris Free Does not contain conflict minerals

Phthalate and Lead Free to meet CPSC/CPSIA (children's products) environmental and health standards.

SPECIFIC TREATMENTS

Stain Resistant with Resilience^{SR} Abrasion Resistant Anti-Bacterial Anti-Microbial Bleach Cleanable Mildew Resistant Sulfide Stain Resistant

Resilience^{SR}

ENDURING PROTECTION Resilience^{SR} represents the latest technology in faux leather and vinyl protection, enhancing performance where it is needed the most.

Stain Resistance: With proper care, materials treated with Resilience^{SR} can be easily cleaned and will guard against stains, maintaining the desired surface appearance for years to come.

Anti-Microbial & Anti-Bacterial Protection: Products treated with Resilience^{SR} are engineered to inhibit bacterial growth, as well as fungus, mold and spores, resulting in a more hygienic environment.

Abrasion Resistance: Resilience^{SR} provides additional wear properties and surface durability to any vinyl or faux leather, thereby increasing the life of the material. Resilience^{SR} is not visible, and does not affect the hand of the material. Resilience^{SR} is engineered to last, even after repeated cleaning and wear.

Specify Resilience^{SR} for the most demanding healthcare and hospitality applications.

CLEANING INFORMATION

WS: Water/Solvent Cleaner – Spot clean with a mild solvent, an upholstery shampoo, or the foam from a mild detergent. When using a solvent or dry cleaning product, follow instructions carefully and clean only in a well-ventilated room. Avoid any product that contains carbon tetrachloride or other toxic materials. With either method, pretest a small area before proceeding. Always rinse promptly with clean water.

BC: Bleach Cleanable - 1 part bleach, 9 parts water = 10% bleach, 90% water solution. Do not clean/disinfect fabric for longer than 10 minutes using the 10% bleach solution. Always rinse promptly with clean water after applying the bleach solution. Failure to do so will void any and all warranties.

Recommended Care and Cleaning Steps

Prompt cleaning is always recommended. Please follow the cleaning guide by type of stain.

Regular Cleaning and Maintenance (Dirt, Dust, Grime): Clean the soiled area with mild soap and water, then rinse with fresh water and wipe dry with a clean cloth.

Food Stains/Oils (Ketchup, Chocolate, Coffee, Tea, Juice): Wipe affected area with a soft cloth or soft bristle brush using a non-abrasive cleaner, for example Formula 409™ or Fantastik™. Rinse with fresh water and wipe dry.

Healthcare (Blood, Urine, Betadine): Clean/disinfect the soiled area with a 10% solution of household bleach and water. It is important to rinse the cleaned area with fresh water after applying the bleach solution.

Difficult Stains (Eye shadow, Mascara, Lipstick, Crayon): Clean the soiled area with 50% solution of isopropyl alcohol (rubbing alcohol) and water. It is important to rinse the cleaned area with fresh water after applying the alcohol solution.

NOTE: The use of commercial vinyl conditioners and protectants is NOT RECOMMENDED.

The information in this cleaning guide refers to performance of Resilience in specific tests conducted under laboratory conditions. This information does not imply a specific guarantee and does not relieve the user from the responsibility of the proper and safe use of the product and referenced cleaning agents.

ADDITIONAL INFORMATION

Custom Capabilities: All patterns can be custom colored. Minimum yardage applies.

Memo Samples: Please keep this card intact. Individual memo samples can be ordered on our website or by contacting customer service.

Fabric Color Matching: Mayer Fabrics always attempts to ship a satisfactory commercial match. Because of industry standard dye lot variation, colors may not match exactly.

Digital Swatch Card Color Matching: Due to color variations on different monitors and color printers, actual swatch colors may vary slightly. Please request a memo sample from Mayer Fabrics to ensure proper color representation.

Specifications: Specifications are correct at the time of printing. Current specifications are available on our website.

For information or assistance with products or services, call us at 800.428.4415 or refer to our website.

