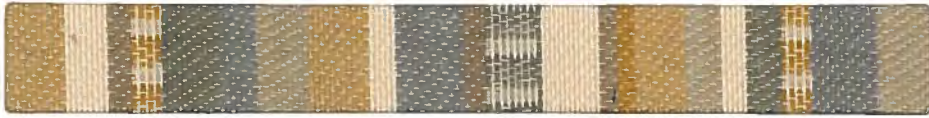




**PRIME**

 CRYPTON®



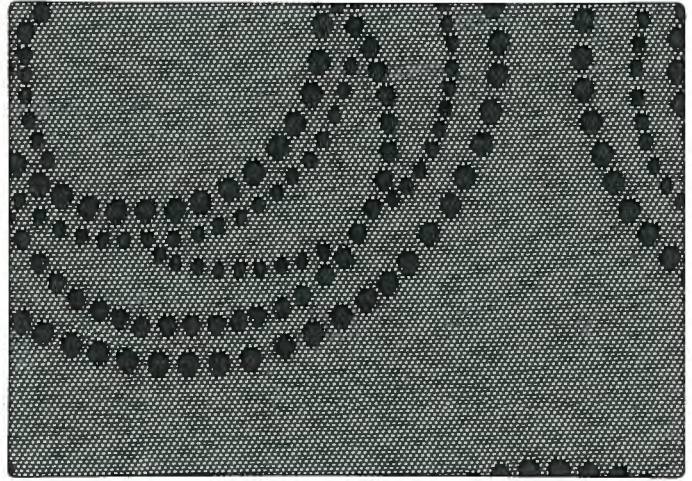
Pomona Soufflé



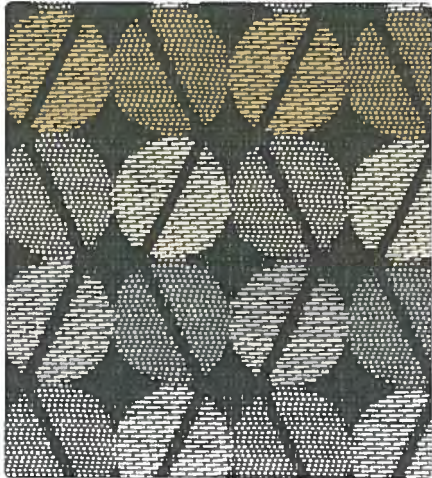
Discover Butterscotch



Prudential Saffron



Palmyra Slate



Ponset Steel



Discover Chiffon



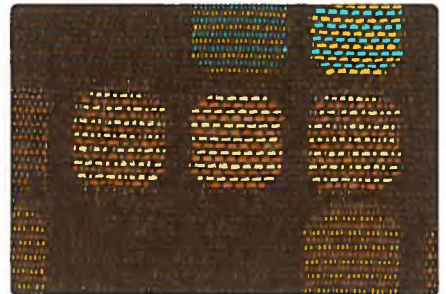
Discover Iron



Pembroke Shell



Prudential Peppercorn



Preston Sable



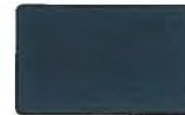
Discover Pumpnickel



Pomona Sandalwood



Penobscot Nautical



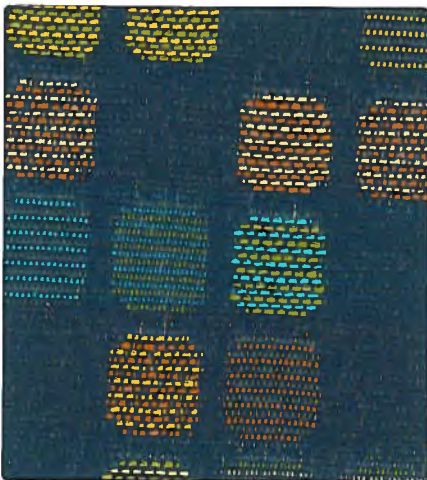
Discover Blueberry



Pembroke Lemon Zest



Pepperell Teal



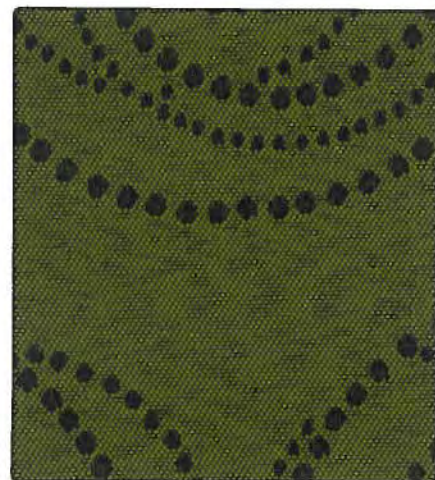
Preston Ballpoint



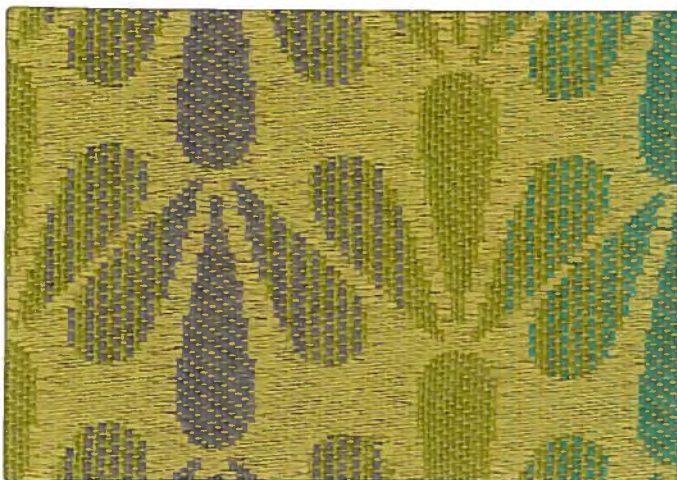
Discover Meridian



Discover Jalapeno



Palmyra Spinach



Pepperell Lime



Pembroke Guacamole



Discover Citronella



Pomona Sprout



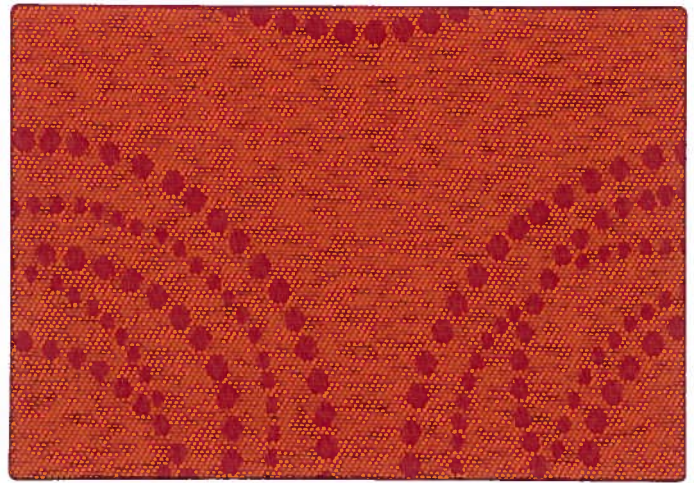
Pomona Carnival



Discover Matador



Pembroke Salsa



Palmyra Heartthrob



Ponset Cherry



Discover Maize



Discover China Red



Parkside Senorita



Pepperell Pomegranate



Portland Jubilee



Discover Beet



Penobscot Sangria

# PRIME

## SPECIFICATIONS

**PALISADES**  
when performance is paramount

Pattern	Content	Weight (per yard)	Repeat	Abrasion ASTM 4197 (Double Rubs)	Colorfastness AATCC Test Method B	Lightfastness AATCC 16E	Seam Slippage ASTM-D-4034	Break Strength ASTM-D1682	Tear Strength ASTM-2262
Palmyra	52% Polyester, 31% Post Industrial Recycled Polyester, 17% Post Consumer Recycled Polyester	12 oz.	H - 7 1/2" V - 7 1/4"	50,000	Wet-Class 4.5 Dry-Class 5	40 Hours Class 4	Warp-47 lbs. Fill-78 lbs.	Warp-226 lbs. Fill-191 lbs.	Warp-15 lbs. Fill-23 lbs.
Parkside	100% Polyester	15 oz.	H - 2 1/2" V - 2 7/16"	51,000	Wet-Class 4.5 Dry-Class 5	40 Hours Class 4	Warp-51 lbs. Fill-96 lbs.	Warp-214 lbs. Fill-299 lbs.	Warp-33 lbs. Fill-68 lbs.
Pembroke	100% Polyester	16 oz.	H - 1 7/8" V - 1 5/8"	60,000	Wet-Class 4.5 Dry-Class 5	40 Hours Class 4	Warp-57 lbs. Fill-88 lbs.	Warp-237 lbs. Fill-324 lbs.	Warp-21 lbs. Fill-54 lbs.
Penobscot Railroaded	75% Polyester, 16% Post Industrial Recycled Polyester, 9% Post Consumer Recycled Polyester	15 oz.	H - 4 1/2" V - 0"	51,000	Wet-Class 4.5 Dry-Class 5	40 Hours Class 4	Warp-44 lbs. Fill-62 lbs.	Warp-220 lbs. Fill-256 lbs.	Warp-24 lbs. Fill-61 lbs.
Pepperell Railroaded	51% Acrylic, 49% Polyester	14 oz.	H - 4 5/8" V - 1 1/2"	50,000	Wet-Class 5 Dry-Class 4	40 Hours Class 4	Warp-51 lbs. Fill-43 lbs.	Warp-461 lbs. Fill-345 lbs.	Warp-41 lbs. Fill-38 lbs.
Pomona Railroaded	100% Polyester	16 oz.	H - 5 7/8" V - 1/4"	60,000	Wet-Class 4.5 Dry-Class 5	40 Hours Class 4	Warp-46 lbs. Fill-61 lbs.	Warp-232 lbs. Fill-347 lbs.	Warp-39 lbs. Fill-64 lbs.
Ponset	55% Cotton, 45% Polyester	11 oz.	H - 1 1/4" V - 2 5/8"	51,000	Wet-Class 4.5 Dry-Class 5	40 Hours Class 4	Warp-61 lbs. Fill-94 lbs.	Warp-209 lbs. Fill-68 lbs.	Warp-16 lbs. Fill-8 lbs.
Portland	100% Polyester	14 oz.	H - 3/4" V - 3/4"	51,000	Wet-Class 4.5 Dry-Class 5	40 Hours Class 4	Warp-69 lbs. Fill-92 lbs.	Warp-207 lbs. Fill-283 lbs.	Warp-21 lbs. Fill-71 lbs.
Preston	51% Acrylic, 49% Polyester	14 oz.	H - 7 5/16" V - 8 5/8"	50,000	Wet-Class 5 Dry-Class 4	40 Hours Class 4	Warp-51 lbs. Fill-43 lbs.	Warp-461 lbs. Fill-345 lbs.	Warp-41 lbs. Fill-38 lbs.
Prudential Railroaded	54% Polyester, 30% Post Industrial Recycled Polyester, 16% Post Consumer Recycled Polyester	11 oz.	H - 3 5/8" V - 2 1/2"	51,000	Wet-Class 4.5 Dry-Class 5	40 Hours Class 4	Warp-82 lbs. Fill-71 lbs.	Warp-229 lbs. Fill-155 lbs.	Warp-22 lbs. Fill-27 lbs.

### FLAME RESISTANCE

California Technical Bulletin 117-2013  
UFAC, Class 1  
NFPA 260

Crypton® FR is available to meet CRIB 5, Boston, New York, IMO Res. A.652 (16) & Cal. 133. Yardage minimums apply.

MADE IN



### GENERAL CLEANING METHODS

Studies with ASCR show that nothing works better on Crypton® than a powdered enzyme detergent, such as Tide® or Cheer® mixed with water. Be sure to rinse with a clean cloth and clear water. The fabric must be rinsed thoroughly, leaving no soap residue. Because Crypton® fabrics were designed for easy maintenance, the use of solvent-based cleaners is unnecessary. In fact, some heavy-duty solvents can damage the textile's fibers. To be safe, we recommend that you do not use solvents in the general maintenance of Crypton® fabrics. Diluted bleach (four parts water to one part bleach) can be used to disinfect Crypton®, but should be removed quickly and completely to avoid fading. Bleach that is not completely removed will eventually fade the fabric.

Additional cleaning information can be found at [www.cryptonfabric.com](http://www.cryptonfabric.com)



Crypton is protected by ten global patents -  
U.S. PATENTS 6,541,138, 6,492,001, 6,251,210, 6,207,250, 6,165,920, 6,024,823,  
5,747,392, 5,565,265, and 6,884,491 - OTHER U.S. AND INTERNATIONAL PATENTS PENDING.

©2010 Crypton, Inc. Crypton and the red planet logo are registered trademarks of Crypton, Inc.

## SPECIFICATIONS - Vinyl

Pattern	Content	Weight (per yard)	Finish	Abrasion	
Discover	100% Vinyl, 100% Polyester Knit Backing	28 oz.	Resilience <sup>SR</sup>	100,000	Antibacterial - Antimicrobial - Sulfide Stain Resistant - Ultraviolet Resistant C.A. Tech Bulletin 117, Sec E. - UFAC, Class 1 - NFPA 260 - IMO A.652 (16) 8.2, 8.3 - FVMSS 302

### CLEANING INSTRUCTIONS

Upholstery vinyls are easy to clean. To prevent build-up of dirt and contaminants, which may cause permanent staining, periodic cleaning is highly suggested. The frequency of cleaning is dependent upon the environmental conditions the product is subjected to.

### ANTISEPTIC SURFACE TREATMENT

Liberal apply diluted disinfectant using a sponge, rinse with cold water several times, then wipe dry. Dilution Rates: 6% Clorox - 94% Water, 6% Purex® - 94% Water, 6% Javex - 94% Water, Fantastik®, Lysol® (uncolored solutions), Dettol Solution, or Formula 409®

### NORMAL OFFICE/HOUSEHOLD USE

Most stains can be easily cleaned using warm, soapy water and clear water rinses. Moderate scrubbing with a medium bristle brush will help to loosen soiling materials from the depressions of embossed surfaces. For more stubborn stains, use commercially available mild detergents (Formula 409®, Fantastik®, Mr. Clean®) in accordance with the manufacturer's instructions. Full strength rubbing alcohol or mineral spirits may be tried with caution if the listed cleaners do not work. Indiscriminate use of strong solvents can severely damage or discolor vinyl.



412 Boston Avenue Egg Harbor City NJ 08215 / [www.dougind.com](http://www.dougind.com) / Samples Fax 609 965 3221 / Samples e-mail [samples@dougind.com](mailto:samples@dougind.com)

Customer Service Phone 800 950 3684 / Customer Service Fax 609 965 7271 / Customer Service e-mail [service@dougind.com](mailto:service@dougind.com)