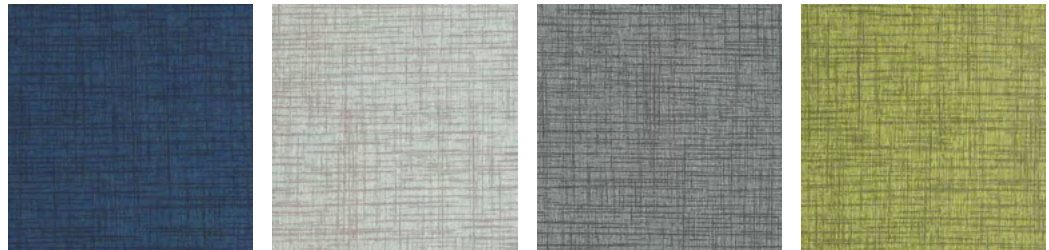


Protect your investment.

How to care for your fabric.

Fabric: Muse
Type: Vinyl



CARE AND CLEANING

Prompt cleaning is always recommended. Cleaning steps are listed by type of stain.

Regular Cleaning and Maintenance: *Dirt, Dust, Grime*

Clean the soiled area with mild soap and water, then rinse with fresh water and wipe dry with a clean cloth.

Food Stains / Oils: *Ketchup, Chocolate, Coffee, Tea,*

Wipe affected area with a soft cloth or soft bristle brush using a non-abrasive cleaner, for example Formula 409™ or Fantastik™. Rinse with fresh water and wipe dry.

Healthcare: *Blood, Urine, Betadine*

Clean the soiled area with a 10% solution of Household Bleach and water. It is important to rinse the cleaned area with fresh water after applying the bleach solution.

Different Stains: *Mascara, Eyeshadow, Lipstick, Grease, Crayon*

Clean the soiled area with a 50% solution of Isopropyl Alcohol (Rubbing Alcohol) and water. It is important to rinse the cleaned area with fresh water after applying the alcohol solution.

The use of commercial vinyl conditioners and protectants is not recommended.

Note: The information in this cleaning guide refers to performance in specific tests conducted under laboratory conditions. This information is not a guarantee that every stain will be removed completely. Some residual ghosting may be present after all cleaning steps are followed.

The results for the cleaners/disinfectants listed does not imply "approved" or that the results are guaranteed. These evaluations are indicators after laboratory testing and may not be indicative of field performance. Customers should first determine if products are appropriate for use on their surfaces.

The majority of today's disinfectant chemistries are mainly designed for use on hard environmental surfaces such as ceramic, porcelain, laminate, steel etc. After each application these types of disinfectants on seating surfaces the surface must be wiped with clean water and dried with a clean towel to remove any chemical residue that could eventually discolor or degrade the material surface. Failure to follow the above dilution recommendations, directions when using these types of cleaners/disinfectants or the application of a clean water rinse after each application can expedite a product failure and will void any warranty claim.

For additional questions or assistance, contact your Regional Sales Rep or Butler Customer Support.



413-A Branchway Road
North Chesterfield, Virginia 23236
877.852.0784 | 804.897.0053 f
sales@butlerhumanservices.com
butlerhumanservices.com